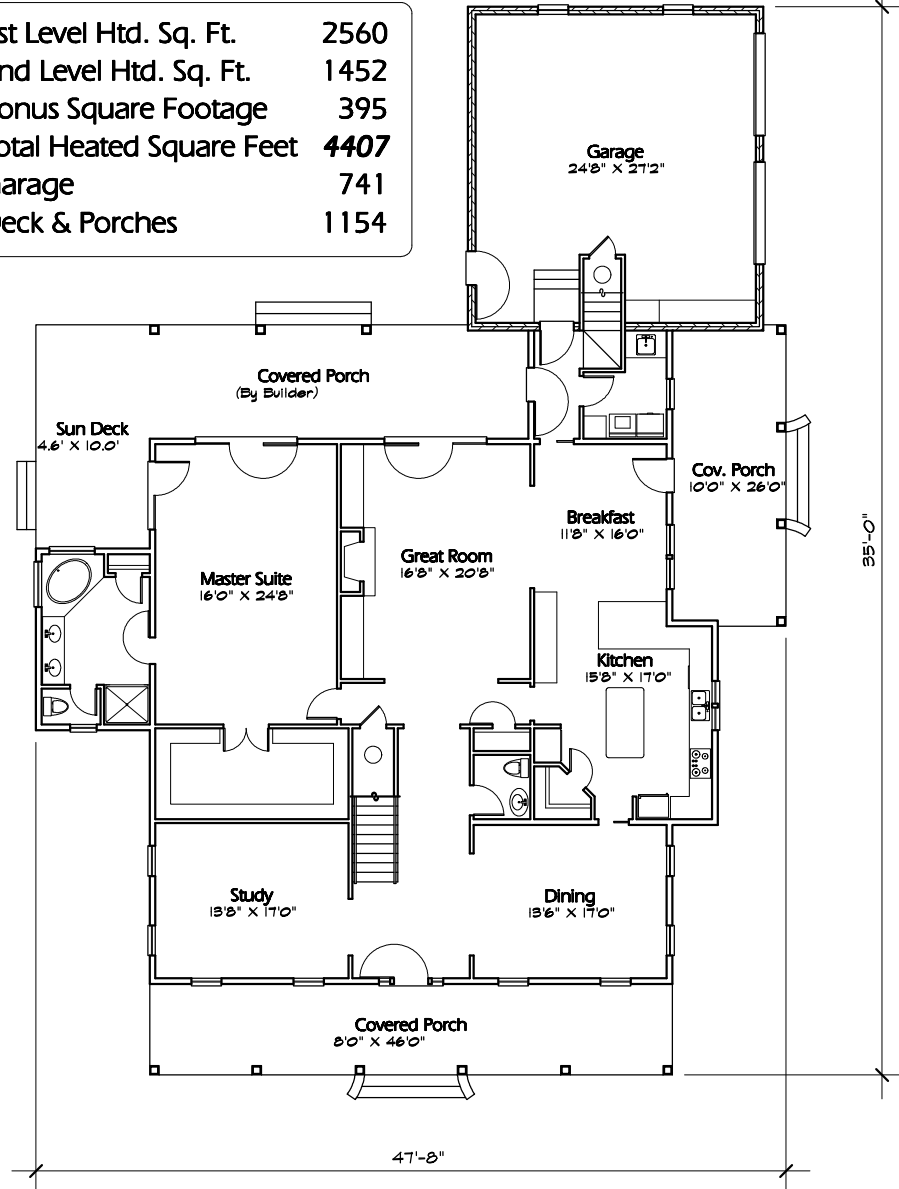
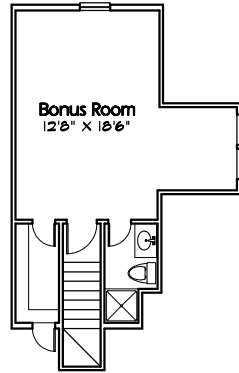
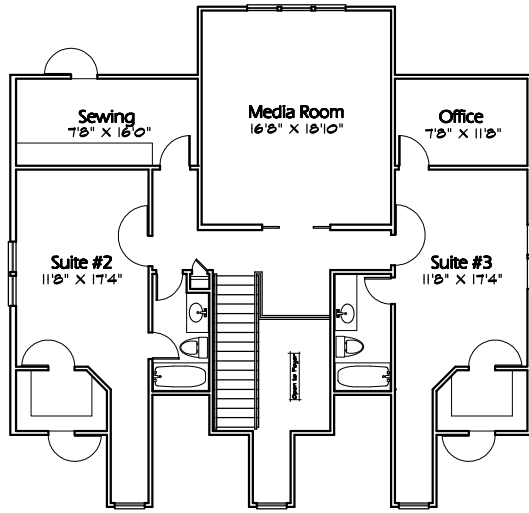


" The Garner Rose "

Area Tabulation

1st Level Htd. Sq. Ft.	2560
2nd Level Htd. Sq. Ft.	1452
Bonus Square Footage	395
Total Heated Square Feet	4407
Garage	741
Deck & Porches	1154



SMITH NEWKIRK
 DRAFTING AND DESIGN, L.L.C.
 5917 OLEANDER DRIVE SUITE 108
 WILMINGTON, NORTH CAROLINA

